



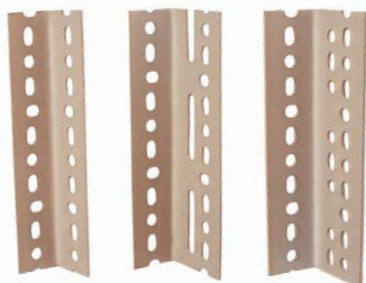
Slotted Angle construction system

Dexion Slotted Angle provides simple cost efficient solutions to virtually any storage requirement.

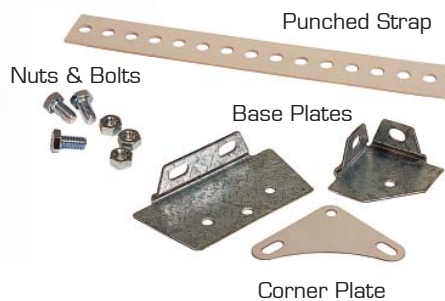
Slotted Angle is used in a wide variety of applications including shelving, benches, trolleys and light construction work such as creating supports or structural bases.

Components

Slotted Angle's unique pre-punched holes allow multiple steel sections to be bolted together to form sturdy shelving and storage systems. Combining steel shelves with Slotted Angle uprights provides one of the most versatile and economical shelving systems available.



Angle 160 Angle 225 Angle 260



With a wide range of heights, depths and lengths, Slotted Angle is a quick and easy storage solution for stores, workshops, warehouses or wherever a cost effective and easily assembled shelving unit makes a difference.

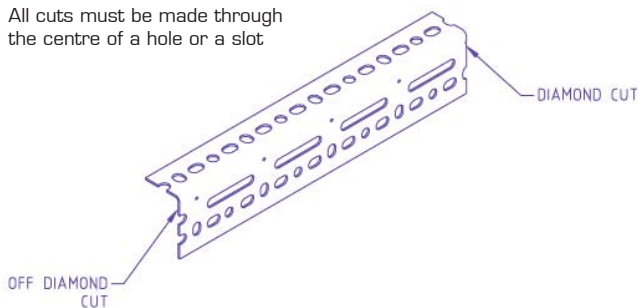
Specifications	Angle 160	Angle 225	Angle 260
Angle Size	40mm x 40mm x 1.8mm	62mm x 41mm x 1.8mm	66mm x 44.4mm x 2.5mm
Standard Lengths	2286mm and 3810mm Lengths can be cut to size	3810mm Lengths can be cut to size	3810mm Lengths can be cut to size
Shelf Carrying Capacity	Up to 240kg	Up to 240kg	Up to 240kg
Shelving Bay Carrying Capacity	Up to 1035kg		
Shelving Bay Clear Entry	750, 900, 1050, 1200mm	750, 900, 1050, 1200mm	750, 900, 1050, 1200mm
Shelving Bay Clear Depths	300, 400, 450, 500, 600mm	300, 400, 450, 500, 600mm	300, 400, 450, 500, 600mm
Shelf Heights	30mm	30mm	30mm
Shelf Pitch	25mm	25mm	25mm
Colour	Stone White	Stone White	Stone White

Slotted Angle assembly guide

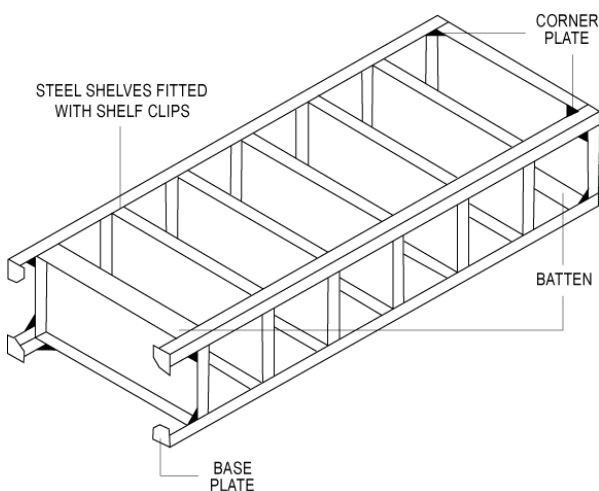
1 Cutting

Diamond-shaped cutting marks are stamped on all angles at 76mm intervals. Whatever the length of angle you require, make the first cut at one of these marks, making a second cut if necessary to trim to exact length you need.

All cuts must be made through the centre of a hole or a slot



2 Assembly

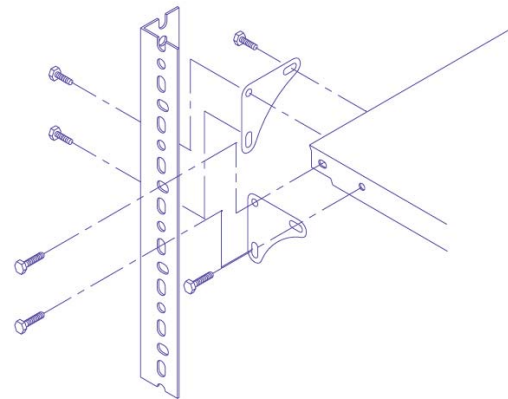


Bolted steel shelves

- Fit a base plate to the bottom of each upright
- Fit corner plates to the uprights on the side and the back of the bottom shelf level by bolting finger-tight through the lowest hole of the corner plate.
- Fit the batten to the front upright at the bottom shelf level by bolting it finger-tight.

- Bolt the front uprights to the bottom shelf through the side flanges - at the same time fix the batten and the corner plates in front-to-back plane

The corner plates should be sandwiched between the uprights and shelves or beams and should be fitted in both planes - front and side flanges of uprights.



- Fit the shelves into the boxed bay using shelf clips at levels required
- Fit corner plates to the uprights on the side and the front of the top shelf level by bolting finger-tight through the lowest hole of the corner plate
- Fit batten to the back uprights at the top shelf level by bolting it finger-tight.
- Bolt the front uprights to the top shelf through the side flanges - at the same time fix the batten and the corner plates in front-to-back plane
- Stand shelving bay up, square up, and tighten all bolts.

Adjustable shelves

Follow instructions i to viii above but with top and intermediate shelves 1.524m apart, bolted with corner plates, Fit adjustable shelf clips at the levels required and fit shelves. Shelf clips can be used with Angle 160 and Angle 225 uprights. Maximum load per shelf with shelf clips is 205kg.

